

Criterion®

User's Manual

18.3 CF Refrigerator

Models: MRF-541W (453-8090), MRF-541B (453-8091), MRF-541S (453-8092)

BEFORE USING YOUR PRODUCT:

Please read this manual carefully and follow all safety rules & operating instructions. Keep this manual for future reference.

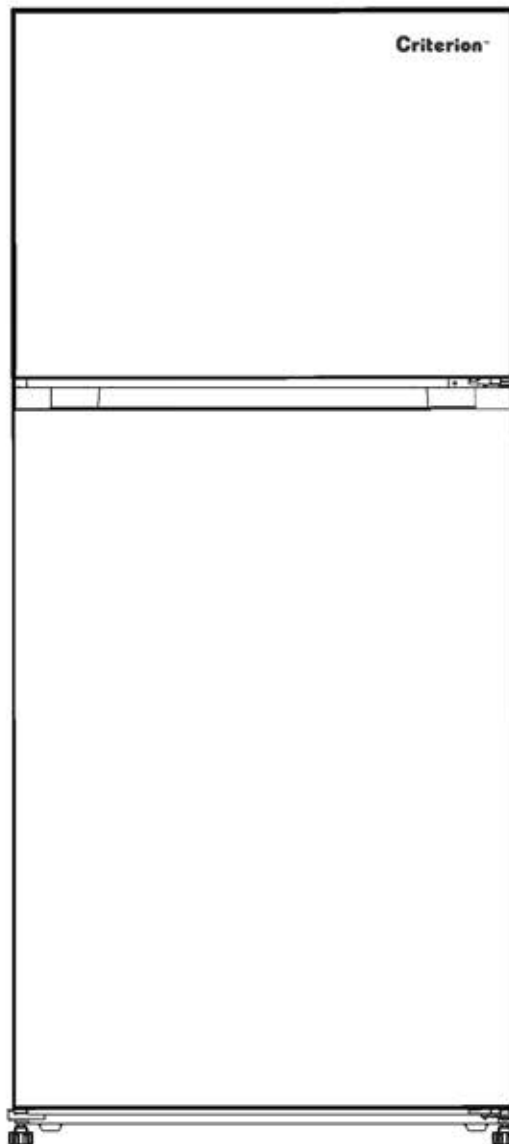


Table of Contents

Safety / Warnings

Safety	4
Warnings	5
Locks	6
Electrical Connections	6

Installation Requirements

Location	7
Leveling Refrigerator	7
Cleaning	8
Switching On	8
Filling	8

Introduction

General Description	8
Using Refrigerator	9
Temperature Adjustments	9

In Use

Food Storage	10
Keeping Food	10
Power Interruption	11
Preparing Freezer	11
Frozen Foods	11–12
Defrosting	12

Moving the Refrigerator

Location	12
Leveling	12
Installation	12
Vacationing	13
Saving Energy	13

Maintenance & Cleaning

Internal	14
External	14
Electrical	14

Servicing

Troubleshooting	15
Disposal	16

Reversing Doors

Removal	16, 17, 18
Assembling	17–18

Limited Warranty

Coverage	18–19
Disclaimer	19

Safety / Warnings

WARNING!

It is hazardous for anyone other than authorized service personnel to carry out servicing or repairs which involves the removal of covers. To avoid the risk of an electric shock do not attempt to repair this appliance yourself.

WARNING!

Risk of fire / flammable materials.

Safety Tips

- Do not use electrical appliances such as a hair dryer or heater to defrost your Freezer.
- Containers with flammable gases or liquids can leak at low temperatures.
- Do not store any containers with flammable materials, such as spray cans, fire extinguisher refill cartridges etc. in the Freezer.
- Do not place carbonated drinks in the Freezer compartment.
- Do not remove items from the Freezer compartment if your hands are damp/wet, as this could cause skin abrasions or "Frost/Freezer burns". Bottles and cans must not be placed in the Freezer compartment as they can burst when the contents freeze.
- Manufacturer's recommended storage times should be adhered to. Refer to relevant instructions.
- Do not allow children to tamper with the controls or play with the Refrigerator. The Refrigerator is heavy. Care should be taken when moving it. It is dangerous to alter the specification or attempt to modify this product in any way.
- Do not store inflammable gases or liquids inside your Freezer.
- If the power cable is damaged, it must be replaced by the manufacturer, its service agent, or similarly qualified persons to avoid a hazard.
- This appliance can be used by children aged from 8 years and above or lack of experience and knowledge if they have been given supervision or instruction concerning use of the appliance in a safe way and understand the hazards involved. Children shall not play with the appliance. Cleaning and user maintenance shall not be made by children without supervision.
- This appliance is intended to be used in household and similar applications such as
 - staff kitchen areas in shops, offices and other working environments;
 - farm houses and by clients in hotels, motels and other residential type environments;
 - bed and breakfast type environments;
 - catering and similar non-retail applications.
- Keep ventilation openings, in the appliance enclosure or in the built-in structure, clear of obstruction.
- Do not use mechanical devices or other means to accelerate the defrosting process, other than those recommended by the manufacturer.
- Do not damage the refrigerant circuit.
- Do not use electrical appliances inside the food storage compartments of the appliance, unless they are of type recommended by the manufacturer.
- Do not store explosive substances such as aerosol cans with a flammable propellant in this appliance.

Safety / Warnings



This appliance is not intended for use by persons (including children) or lack of experience and knowledge, unless they have been given supervision or instruction concerning use of the appliance by a person responsible for their safety. Children should be supervised to ensure that they do not play with the appliance.

- **WARNING:** Keep ventilation openings, in the appliance enclosure or in the built-in structure, clear of obstruction.
- **WARNING:** Do not use mechanical devices or other means to accelerate the defrosting process, other than those recommended by the manufacturer.
- **WARNING:** Do not damage the refrigerant circuit.
- **WARNING:** Do not use electrical appliances inside the food storage compartments of the appliance, unless they are of the type recommended by the manufacturer.
- **WARNING:** Refrigerating appliances – in particular a refrigerator-freezer – might not operate consistently (possibility of defrosting of contents or temperature becoming too warm in the frozen food compartment) when sited for an extended period of time below the cold end of the range of temperatures for which the refrigerating appliance is designed;
- **WARNING:** For doors fitted with locks and keys, the keys should be kept out of the reach of children and not in the vicinity of the refrigerating appliance, in order to prevent children from being locked inside.
- **WARNING:** The refrigerant used in your appliance and insulation materials requires special disposal.
- **WARNING:** When positioning the appliance, ensure the supply cord is not trapped or damaged.
- **WARNING:** Do not locate multiple portable socket-outlets or portable power supplies at the rear of the appliance.

To avoid contamination of food, please observe the following instructions:

- Opening the door for long periods can cause a significant increase of the temperature in the compartments of the appliance.
- Clean regularly surfaces that can come in contact with food and accessible drainage systems.
- Store raw meat and fish in suitable containers in the refrigerator, so that it is not in contact with or drip onto other food.
- Two-star frozen-food compartments are suitable for storing pre-frozen food, storing, or making ice-cream and making ice cubes.
- If the refrigerating appliance is left empty for long periods, switch off, defrost, clean, dry, and leave the door open to prevent mould developing within the appliance.

Locks

If your Freezer is fitted with a lock, to prevent children being entrapped keep the key out of reach and not in the vicinity of the appliance. If disposing of an old Freezer break off any old locks or latches as a safeguard.

Electrical Connection



Improper use of the grounded plug can result in the risk of electrical shock. If the power cord is damaged, have it replaced by an authorized service center.

This refrigerator should be properly grounded for your safety. The power cord of this refrigerator is equipped with a three-prong plug which mates with standard three prong wall outlets to minimize the possibility of electrical shock.

Do not, under any circumstances, cut or remove the third ground prong from the power cord supplied.

This refrigerator requires a standard 115V A.C. ~/60Hz electrical outlet with three-prong ground.

This refrigerator is not designed to be used with an inverter.

The cord should be secured behind the refrigerator and not left exposed or dangling to prevent accidental injury.

Never unplug the refrigerator by pulling the power cord. Always grip the plug firmly and pull straight out from the receptacle.

Do not use an extension cord with this appliance. If the power cord is too short, have a qualified electrician or service technician install an outlet near the appliance. Use of an extension cord can negatively affect the performance of the unit.

Installation Requirements

Installation Location

When selecting a position for your Refrigerator you should make sure the floor is flat and firm, and the room is well ventilated. Avoid locating your Refrigerator near a heat source, e.g. cooker, boiler, or radiator. Also avoid direct sunlight in out-buildings or sun lounges. If you are placing your Refrigerator in an out-building such as a garage or annex ensure that the Refrigerator is placed above the damp course, otherwise condensation will occur on the Refrigerator cabinet. Never place the Refrigerator in a wall recess or into fitted cabinets or furniture. When your Refrigerator is working, the grille at the back may become hot and the sides warm. Therefore, the back part of the refrigerator / freezer must be installed at least 50mm of free space, both sides should be left more than 100mm. Do not drape the Refrigerator with any covering.

Dimensions in mm

W	D	H	A	B	C(°)	E	F
750	785	1680	1280	1490	130±5	50	100

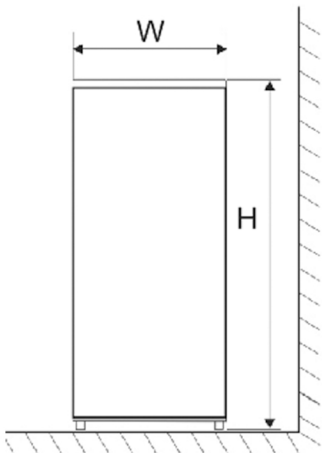


Fig. 1

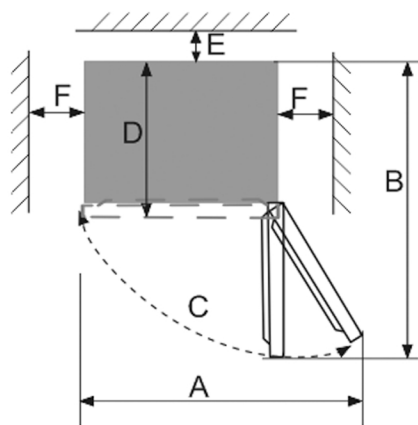
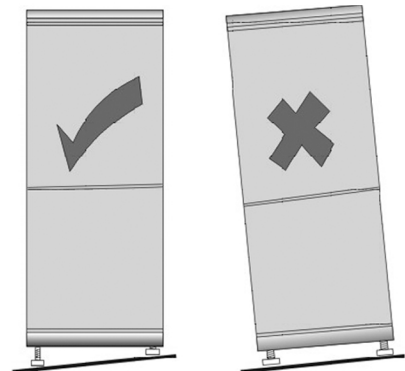


Fig. 2

Note: Figure 1, Figure 2 only as a product space demand size schematic diagram.

Leveling the Refrigerator

If the Refrigerator is not level, the door and magnetic seal alignment will be affected and may cause you Refrigerator to work incorrectly. Once the Refrigerator is placed in its final location, adjust the leveling feet at the front by turning them.



Cleaning Before Use

Wipe the inside of the Freezer with a weak solution of bicarbonate of soda. Then rinse with warm water using a damp sponge or cloth. Wash the baskets and shelves in warm soapy water and dry completely before replacing in the Freezer. The external parts of the Freezer can be cleaned with wax polish.

Before Switching On!

DO NOT SWITCH ON UNTIL FOUR HOURS AFTER MOVING THE FREEZER.

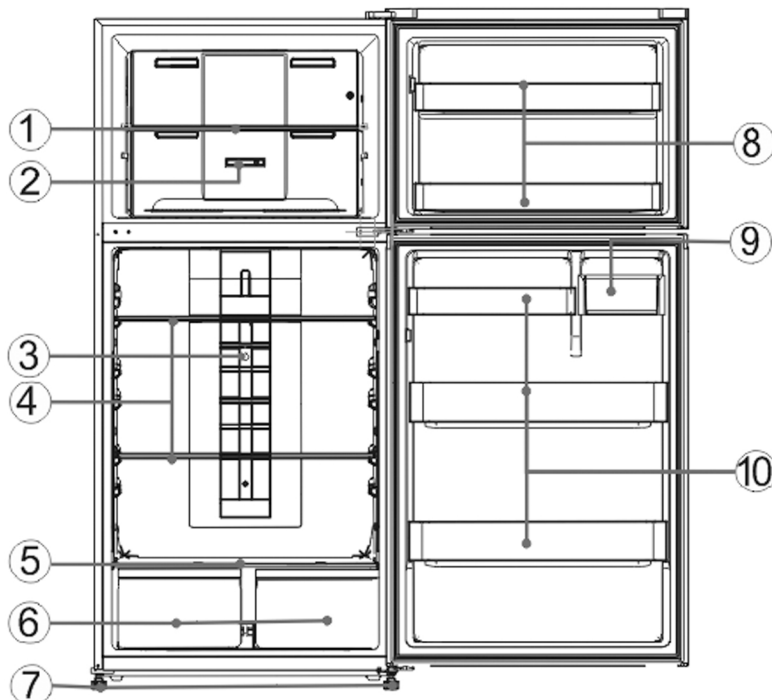
The coolant fluid needs time to settle. If the appliance is switched off at any time, wait 30 minutes before switching back on to allow the coolant fluid to settle.

Before Filling Your Freezer

Before storing foods in your Freezer, turn the Freezer on and wait for 24 hours, to make sure it is working properly and to allow the Freezer to fall to the correct temperature.

Introduction

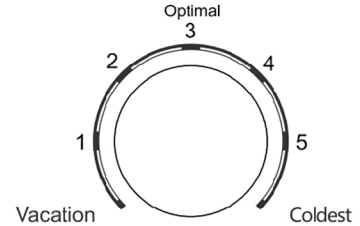
General Description of Refrigerator



No	Description
1	Freezer Shelf
2	Air regulating rod
3	Thermostat
4	Refrigerator Glass Shelves
5	Crisper Cover
6	Salad Crisper
7	Adjustment feet
8	Bottle Racks
9	Butter box
10	Bottle Racks

Using Your Refrigerator

The internal temperature of the refrigerator is controlled by a potentiometer installed in the fresh food compartment. Its internal temperature varies with the door opening frequency, ambient temperature, and installation location of the refrigerator.



Refrigerator Temperature Adjustment

The Refrigerator temperature can be adjusted by means of the temperature control knob switch.

1. The temperature gets gradually decreased as you dial the temperature control knob switch from the position “1” to “5”.
2. To set the knob switch at the “Optimal” position can meet the daily normal use.
3. When you need to strengthen cooling of the fresh food compartment, dial the temperature control knob switch in the Coldest direction, to extend the compressor running time, with the temperature decreased accordingly.

Note: It is not recommended to set the temperature control knob at the “Coldest” position for a long time.

Freezer Temperature Adjustment

When the temperature control knob switch in the fresh food compartment remains unchanged, the freezer temperature becomes gradually decreased as the slider of FREEZER AIR FLOW is adjusted from “MIN” to “MAX”.

Note: During the actual use, the freezer air regulating lever may be frozen due to high humidity or frequent opening of the door. In such case, do not adjust the regulating lever by force; Instead, you are recommended to use a hot towel to heat it locally, so that the frozen air regulating lever gets thawed before being adjusted to avoid damage.

Recommended optimal temperature modes

SEASON	SUGGESTED MODES	TIPS
In summer (higher than 35°C)		It is recommended not to set the regulating lever at MAX position for a long time.
Normal condition (spring and autumn)		
In winter (lower than 13°C)		

CAUTION: Avoid setting both the refrigerator temperature mode and the freezer temperature mode to be MAX simultaneously, especially in the summer season. This may lead to the fresh food compartment cooling down slowly, thus the unpleasant user experience.

In Use

1. The appliance might not operate consistently (possibility of defrosting of contents or temperature becoming too warm in the frozen food compartment) when sited for an extended period of time below the cold end of the range of temperatures for which the refrigerating appliance is designed
2. The information about the climate range of the appliance is provided on the rated plate.
3. The fact that the internal temperatures could be affected by such factors as the location of the refrigerating appliance, ambient temperature and the frequency of door opening, and, if appropriate, a warning that the setting of any temperature control device might have to be varied to allow for these factors
4. Effervescent drinks should not be stored in food freezer compartments or cabinets or in low-temperature compartments or cabinets.
5. The need to not exceed the storage time(s) recommended by the food manufacturers for any kind of food

Storage of food

1. Cook dishes can be put into refrigerator to keep fresh after their temperature decreases to room temperature.
2. Food to be stored should be wrapped with clean plastic film.
3. Fruits and vegetables should be put into the salad crisper to prevent excessive evaporation of water and freshness.
4. Cool hot food down to the room temperature before storing otherwise consumption of electricity will increase and would lead to frost forming inside.
5. In the case of refrigerating appliances with chill compartment, some types of fresh vegetables and fruits are sensitive to cold, therefore they are not suitable for storage in this compartment.
6. Effervescent drinks should not be stored in food freezer compartments or cabinets or in low-temperature compartments or cabinets.

Tips for keeping food in the Refrigerator

1. Cooked meats should always be stored on a shelf above raw meats to avoid bacterial transfer. Keep raw meats on a plate which is large enough to collect juices and cover it with cling film or foil.
2. This allows cold air to circulate around the Refrigerator, ensuring all parts of the Refrigerator are kept cool.
3. To prevent transfer of flavors and drying out, food should be separately packed or covered. Fruit and vegetables need not be wrapped.
4. Allow pre-cooked food to cool down before placing in the Refrigerator. This will help to stop the internal temperature of the Refrigerator from rising.
5. To prevent cold air escaping, try to limit the number of times you open the door. When returning from shopping, sort foods to be kept in your Refrigerator before opening the door. Only open the door to put food in or take it out.

Interruption of power supply or failure of the refrigerating system

The care required regarding frozen food in storage in the event of an extended non-running of the refrigerating appliance (interruption of power supply or failure of the refrigerating system)

1. Do not open the refrigerator door as much as possible so that even in hot summer food can be safely and freshly kept for hours.

Preparations for freezing

1. Leave cooked food to cool completely.
2. Chill food in a Refrigerator before freezing if possible.
3. Consider how you want to cook the food before freezing it.
4. Do not freeze food in metal containers as you may want to microwave it straight from the Freezer.
5. Use special Freezer bags available from supermarkets, Freezer film, polythene bags, plastic containers, aluminum foil for acidic foods (such as citrus fruits). Do not use thin cling film or glass. Do not use used food containers (unless cleaned thoroughly first).
6. Remove as much air from the container as possible.
7. Leave a small amount of "air space" when freezing liquids, to allow for expansion.

Tips for shopping for frozen foods

1. When buying frozen food, look at the Storage Guidelines on the packaging. You will be able to store each item of frozen food for the period shown against the star rating. This is usually the period stated as "Best, before", found on the front of the packaging.
2. Check the temperature of the frozen food cabinet in the shop where you buy your frozen foods.
3. Make sure the frozen food package is in perfect condition.
4. Always buy frozen products last on your shopping trip or visit to the supermarket.
5. Try to keep frozen food together while shopping, and on the journey home as this will help to keep the food cooler.
6. Do not buy frozen food unless you can freeze it straight away. Special insulated bags can be bought from most supermarkets and hardware shops. These keep frozen food cold for longer.
7. For some foods, thawing before cooking is unnecessary. Vegetables and pasta can be added directly to boiling water or steam cooked. Frozen sauces and soups can be put into a saucepan and heated gently until thawed.

In Use (con't)

Tips for shopping for frozen foods (con't)

8. Use quality food and handle it as little as possible. Freeze food in small quantities, it freezes faster, takes less time to thaw and enables you to eat it in the quantity you need.
9. First, estimate the amount of food you will be freezing. If you are freezing large amounts of fresh food, remember to turn the control dial to the low temperature range. This will lower the temperature in the Freezer, freezing your food quicker and helping to keep the goodness in. However, you should do this sparingly to conserve energy.

Defrosting

This appliance is designed as automatic defrosting, no need to defrost by hand.

Moving the Refrigerator

Location

Do not place your Refrigerator near a heat source, e.g. Cooker, boiler, or radiator. Also avoid direct sunlight in out-buildings or sun lounges.

Leveling the Refrigerator

Make sure the Refrigerator is level. Use the rotating leveling feet at the front. If the Refrigerator is not level, the doors and magnetic seal alignments will be affected and may cause your Refrigerator to work incorrectly.

After the Refrigerator is in place, it can be used after 4 hours. This allows time for the coolant to settle.

Installation

Do not cover or block the vents or grilles of your appliance.

Moving the Refrigerator (con't)

If you are not at home for a long time

- If the appliance will not be used for several months, turn off the refrigerator first and then unplug the unit from the wall outlet.
- Remove all the food.
- Clean and dry the interior thoroughly. To prevent odor and mold growth, leave the door open slightly: blocking it open if necessary or have the door removed.
- Keep the cleaned Refrigerator in a dry, ventilated place away from the heat source, where the Refrigerator is placed smoothly and do not place heavy objects on top of the Refrigerator.
- Use extreme caution in the case of children. The unit should not be accessible to child's play.

Save energy

1. Install the refrigerator in the coolest part of the room, out of direct sunlight and away from heating ducts or registers. Do not place the refrigerator next to heat-producing appliances such as a range, oven, or dishwasher.
2. The refrigerator door should remain open only if necessary; do not place hot food inside the refrigerator.
3. Organize the refrigerator to reduce door openings. Remove as many items as needed at one time and close the door as soon as possible.
4. The refrigerator door should be properly closed to avoid increased energy consumption, and the formation of excess ice and / or condensation inside.
5. Constantly circulating cold air keeps the temperature homogenous inside the refrigerator. For this reason, it is important to properly distribute the food, to facilitate the flow of air.
6. Cover foods and wipe containers dry before placing them in the refrigerator. This cuts down on moisture build-up inside the unit.
7. Do not overcrowd the refrigerator or block cold air vents. Doing so causes the refrigerator to run longer and use more energy. Shelves should not be lined with aluminum foil, wax paper, or paper toweling. Liners interfere with cold air circulation, making the refrigerator less efficient , which could cause food spoilage.
8. The arrangement of food for storage and for freezing, where applicable, particularly including advice that food to be frozen is not to be placed in direct contact with food in storage and, if appropriate, that it could be necessary to reduce the quantity to be frozen if freezing every day is anticipated.
9. During prolonged absences (example: vacations), it is advisable to disconnect the refrigerator, remove all the food, and clean it. The door should be left slightly open to avoid mold and unpleasant odors. This will not affect the refrigerator when it is reconnected.
10. During short absences (example: holidays), the refrigerator can remain on. However, remember that prolonged power outages may occur while you are gone.
11. The door to the evaporator clearance can be used to store food.
12. The storage time(s) recommended by the food manufacturers for any kind of food and particularly for commercially quick-frozen food in food-freezer and frozen-food storage compartments or cabinets

Save energy (con't)

13. The precautions necessary to prevent an undue rise in the temperature of the frozen food while defrosting the refrigerating appliance, such as wrapping the frozen food in several layers of newspaper.
14. A rise in temperature of the frozen food during manual defrosting, maintenance or cleaning could shorten the storage life.
15. The care required regarding frozen food in storage in the event of an extended non-running of the refrigerating appliance (interruption of power supply or failure of the refrigerating system).

Maintenance and Cleaning

1. Internal cleaning

Clean the Refrigerator internally with a weak solution of bicarbonate of soda. Then rinse with warm water using a damp sponge or cloth and wipe dry. Wash the baskets in warm soapy water and ensure they are completely dry before replacing in the Refrigerator.

2. External cleaning

Use standard non-abrasive detergent diluted in warm water to clean the Refrigerator exterior.

The grille of the condenser at the back of the Refrigerator and the adjacent components can be vacuumed using a soft brush attachment.

Do not use harsh cleaners, scouring pads or solvents to clean any part of the Refrigerator

ELECTRICAL INFORMATION

THIS APPLIANCE MUST BE GROUNDED.

This appliance is fitted with a plug which will be suitable for use in all houses fitted with sockets to current specifications.

If the fitted plug is not suitable for your socket outlets, it should be cut off and carefully disposed of. To avoid a possible shock hazard, do not insert the discarded plug into a socket.

Servicing

TROUBLESHOOTING

Not every failure requires technical service personnel to solve the following simple small problem; you can try to solve the problem.

CASE	INSPECTION	SOLUTIONS
<ul style="list-style-type: none"> • Completely non refrigeration 	<ul style="list-style-type: none"> • Is power plug off? • Are breakers and fuses a broken? • No electricity or line trip? 	<ul style="list-style-type: none"> • Re-plug. • Opening the door and checking whether the lamp is lit.
<ul style="list-style-type: none"> • Abnormal noise 	<ul style="list-style-type: none"> • Is refrigerator stable? • Does refrigerator reach the wall? 	<ul style="list-style-type: none"> • Adjusting refrigerator's adjustable feet. • Off the wall.
<ul style="list-style-type: none"> • Poor refrigerating efficiency 	<ul style="list-style-type: none"> • Insert hot food or too much food? • Is the door opened frequently? • Is the door fully closed? • Direct sunlight or near a furnace or stove? • Is it well-ventilated? • Temperature setting is too high? 	<ul style="list-style-type: none"> • Putting food into refrigerator when hot food becomes cool. • Checking and closing the door. • Removing the refrigerator from the heat source. • Emptying the distance to maintain good ventilation. • Setting to the appropriate temperature.
<ul style="list-style-type: none"> • Peculiar smell in refrigerator 	<ul style="list-style-type: none"> • Any spoiled food? • Do you need to clean refrigerator? • Did you pack food with strong odors? 	<ul style="list-style-type: none"> • Throwing away spoiled food. • Cleaning refrigerator. • Packing food of strong flavors.

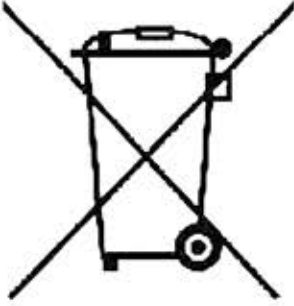
Note: If the above cases cannot be corrected, do not disassemble the repair yourself. Repairs carried out by inexperienced persons may cause injury or serious malfunctioning. Contact the local store where your purchase was made. This product should be serviced by an authorized engineer and only genuine spare parts should be used.

When the appliance is not in use for long periods, disconnect from the electricity supply, empty all foods, and clean the appliance, leaving the door ajar to prevent unpleasant smells.

Disposal

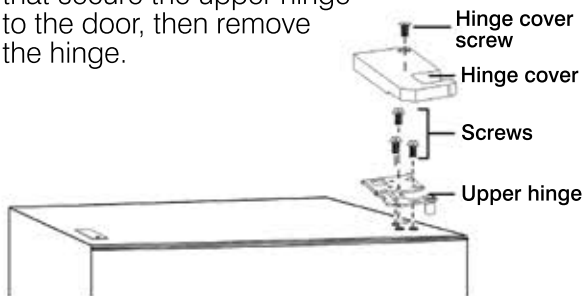
Old appliances still have some residual value. An environmentally friendly method of disposal will ensure that valuable raw materials can be recovered and used again.

The refrigerant used in your appliance and insulation materials requires special disposal procedures. Ensure that none of the pipes on the back of the appliance are damaged prior to disposal. Up to date information concerning options for disposing of your old appliance and packaging from the new one can be obtained from your local council office.

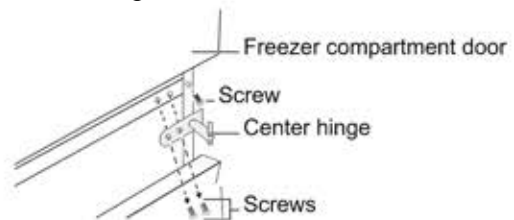
Correct Disposal of this product	
	<p>This marking indicates that this product should not be disposed with other household wastes. To prevent possible harm to the environment or human health from uncontrolled waste disposal, recycle it responsibly to promote the sustainable reuse of material resources. To return your used device, contact the retailer where the product was purchased. They can take this product for environmentally safe recycling.</p>

Reversing the Door

1. Make sure that your refrigerator is unplugged.
2. Remove the hinge cover screw, then pry the hinge cover up and off, remove the three screws that secure the upper hinge to the door, then remove the hinge.



4. Remove the three screws that secure the center hinge.

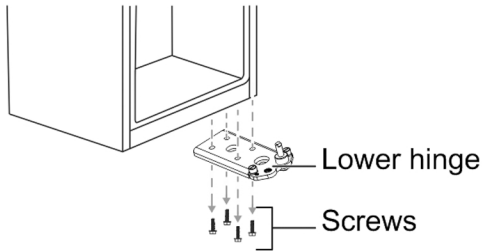


3. Remove the freezer compartment door from the cabinet.

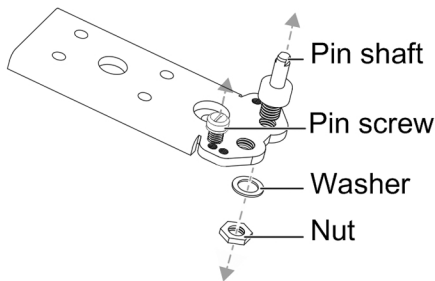
5. Remove the refrigerator compartment door

Reversing the Door (con't)

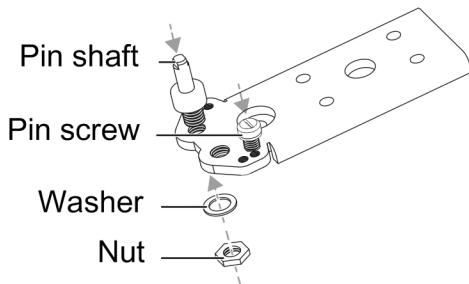
6. Remove the four screws that secure the lower hinge to the right side of the cabinet, then remove the hinge.



7. Remove the washer and nut that secure the pin shaft to the right hole on the lower hinge, then remove the shaft and pin screw

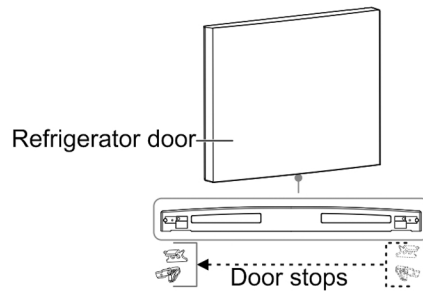


8. Insert the pin screw into the right hole and insert the pin shaft into the left hole on the lower hinge, then secure the shaft with the washer and nut.



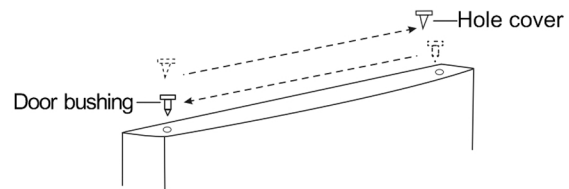
9. Install the lower hinge on the left side of the cabinet.

10. Remove the screw that secures the door stops from the bottom right of the refrigerator compartment door, then remove the door stops and install to the bottom left side.

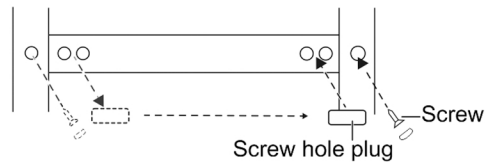


11. Install the refrigerator compartment door.

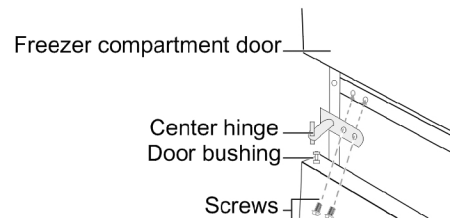
12. Move the door bushing from the top right side of the refrigerator door to the top left side of the door. And move the left hole cover to the right side.



13. Remove screws and the center hinge screw hole plug on the left side of the cabinet, then install in the screw holes on the right side of the cabinet.

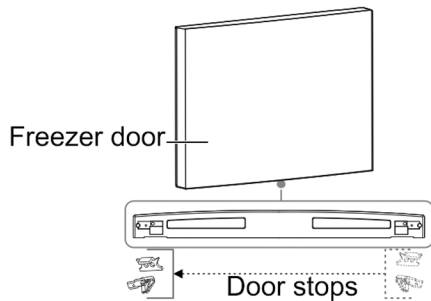


14. Install the center hinge to the left side with the two screws you removed previously.



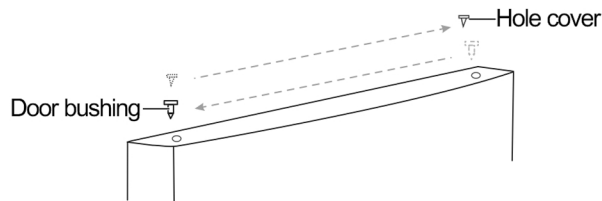
Reversing the Door (con't)

15. Remove the screw that secures the door stops from the bottom right of the freezer compartment door, then remove the door stops and install to the bottom left side.

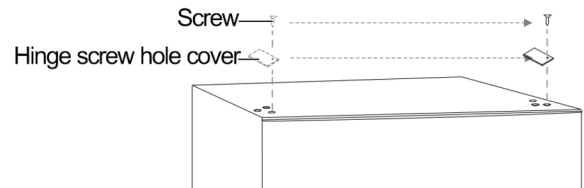


16. Install the freezer compartment door.

17. Move the door bushing from the top right side of the freezer door to the top left side of the door. And move the left hole cover to the right side.

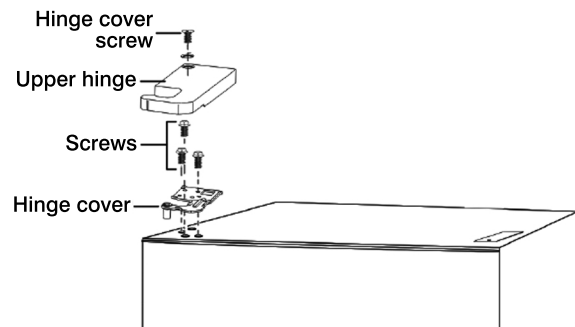


18. Remove the screw that secures the hinge screw hole cover from the top left side of the cabinet, remove the cover, and secure the cover on the top right side of the cabinet.



19. Using the left top hinge (from the accessory bag), secure it to the top left side of the cabinet with the three screws you removed previously. Before you tighten the upper hinge screws, make sure that the top of the door is level with the cabinet and that the rubber gasket makes a good seal.

20. Install the left upper hinge cover (from the accessory bag) over the hinge on the top left side of the cabinet with the one screw you removed previously.



One Year Limited Warranty

Manufacturer provides a limited warranty for each new chest freezer to be free from defects in material and workmanship for a period of 1 year from the date of purchase. Manufacturer agrees to remedy any such defective inside accessory components such as door panels, door shelves, racks, handles, casters, bins and drawers or to furnish a new unit if the unit proves to have failed, at the company's option, for one year from your original date of purchase.

Buyer must register unit at: PlasticDevelopmentGroup.com/applianceregistration.

In the event the unit requires replacement or refund under the terms of this limited warranty, the Buyer is responsible for all transportation expenses to return the unit prior to receiving a replacement unit or refund. A copy of the dated sales receipt/invoice is required to receive benefits of this limited warranty.

One Year Limited Warranty (con't)

This limited warranty covers appliances in use within the continental United States, Alaska, and Hawaii, and Puerto Rico.

This limited warranty does not cover the following:

1. Products with original serial numbers that have been removed, altered or cannot be readily determined.
2. Products that have been transferred from its original owner to another party or removed outside the USA.
3. Rust on the interior or exterior of the unit.
4. Damages due to shipping damage or improper installation.
5. Damages due to misuse or abuse.
6. Service calls, repairs, and labor expenses for any purpose.
7. Content losses and food spoilage due to failure of the unit.
8. Punctures to the evaporation system due to improper defrosting of the unit.
9. Replacement or resetting of house fuses or circuit breakers.
10. Failure or defects of this product if used for other purposes than its intended purpose or used other than in accordance with the provided instructions.
11. Disposal costs for failed unit not returned to Manufacturer.
12. Any delivery/installation costs incurred as the result of a unit that fails to perform as specified.
13. Expenses for travel and transportation for product if you are exchanging or returning the unit.
14. Expenses related to the removal and re-installation of your unit or for making the unit accessible, such as removal of trim, cupboards, shelves, etc. or if not installed in accordance with the provided installation instructions.
15. Damages to the finish of the unit or home incurred during installation, including but not limited to floors, cabinets, walls, etc.
16. Damages caused by external causes such as abuse, misuse, inadequate power supply, accidents, fires, or acts of God.
17. Refunds for returned products are limited to the price paid for the unit per the sales receipt.

Disclaimer of Implied Warranties, Limitation of Remedies and Exclusions:

EXCEPT FOR THE EXPRESS WARRANTIES SET FORTH HEREIN, MANUFACTURER MAKES NO WARRANTY WHATSOEVER (OR THE SHORTEST PERIOD ALLOWED BY LAW) REGARDING THE GOODS, INCLUDING ANY (1) WARRANTY OF MERCHANTABILITY; (2) WARRANTY OF FITNESS FOR A PARTICULAR PURPOSE; (3) WARRANTY OF TITLE; OR (4) WARRANTY AGAINST INFRINGEMENT OF INTELLECTUAL PROPERTY RIGHTS OF A THIRD PARTY; WHETHER ARISING BY LAW, COURSE OF DEALING, COURSE OF PERFORMANCE, USAGE OF TRADE, OR OTHERWISE. BUYER ACKNOWLEDGES THAT IT HAS NOT RELIED ON ANY REPRESENTATION OR WARRANTY MADE BY MANUFACTURER, OR ANY OTHER PERSON ON MANUFACTURER'S BEHALF. REPLACEMENT OF UNIT AND LISTED PARTS IN ACCORDANCE WITH THE TERMS HEREIN, IS YOUR SOLE AND EXCLUSIVE REMEDY UNDER THIS LIMITED WARRANTY. MANUFACTURER IS NOT LIABLE FOR INCIDENTAL OR CONSEQUENTIAL DAMAGES AND NO REPRESENTATIVE OR PERSON IS AUTHORIZED TO ASSUME FOR MANUFACTURER ANY OTHER LIABILITY IN CONNECTION WITH THE SALE OF THIS PRODUCT. UNDER NO CIRCUMSTANCE IS THE CONSUMER PERMITTED TO RETURN THE UNIT TO MANUFACTURER WITHOUT THE PRIOR WRITTEN CONSENT OF MANUFACTURER.

Customer Service, (toll free: 833-953-1758) between the hours of 8:00 am and 4:00 pm CT

EMAIL: appliances@plasticdevelopmentgroup.com

Product Registration: plasticdevelopmentgroup.com/applianceregistration

Customer Service, (toll free: 833-953-1758) between the hours of 8:00 am and 4:00 pm CT
EMAIL: appliances@plasticdevelopmentgroup.com
Product Registration: plasticdevelopmentgroup.com/applianceregistration